

ASCENSION CITOYENNE

AU COEUR DU QUARTIER ROSEMONT



ANALYSE DU SITE

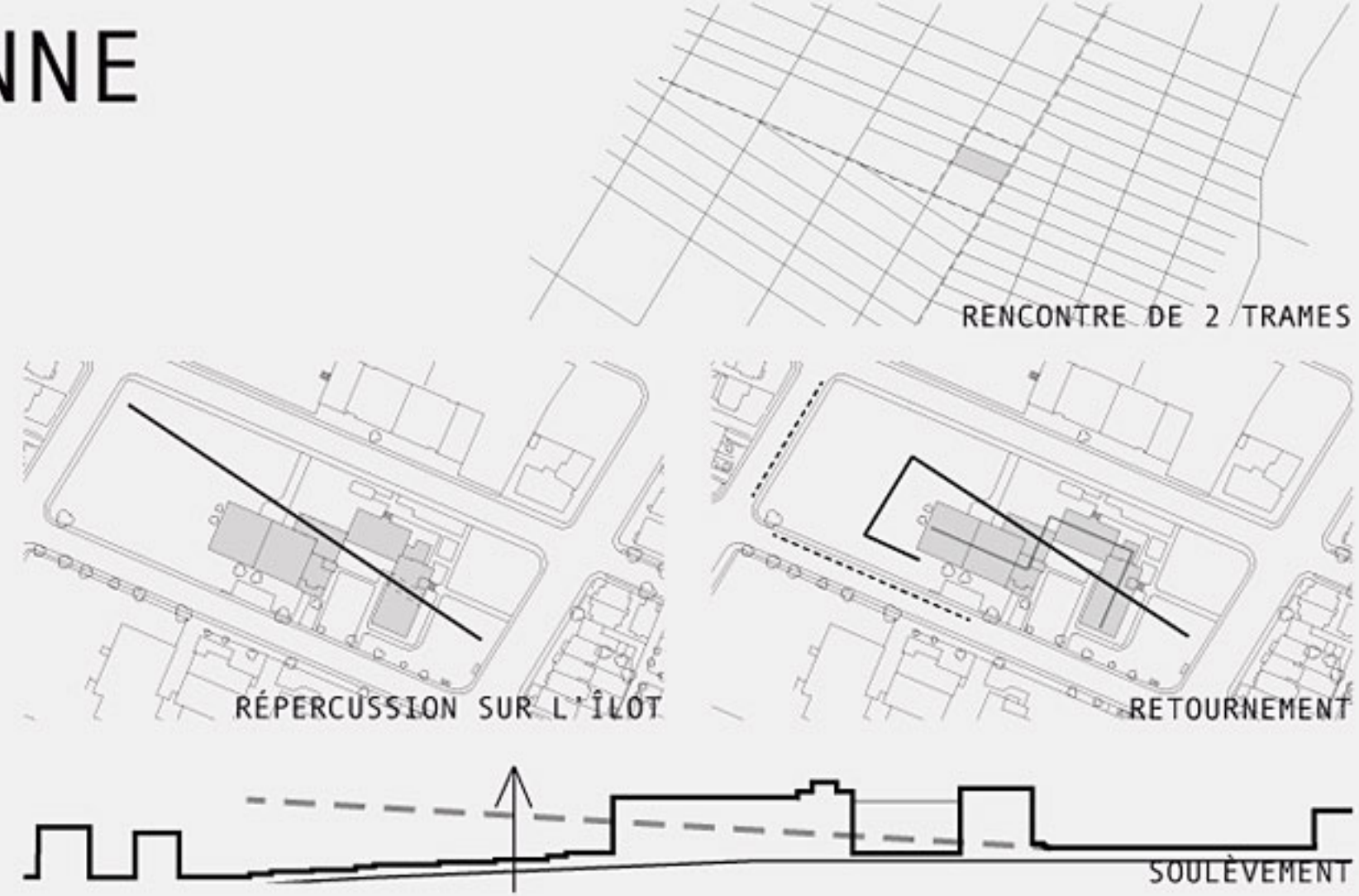


FIGURE URBAINE

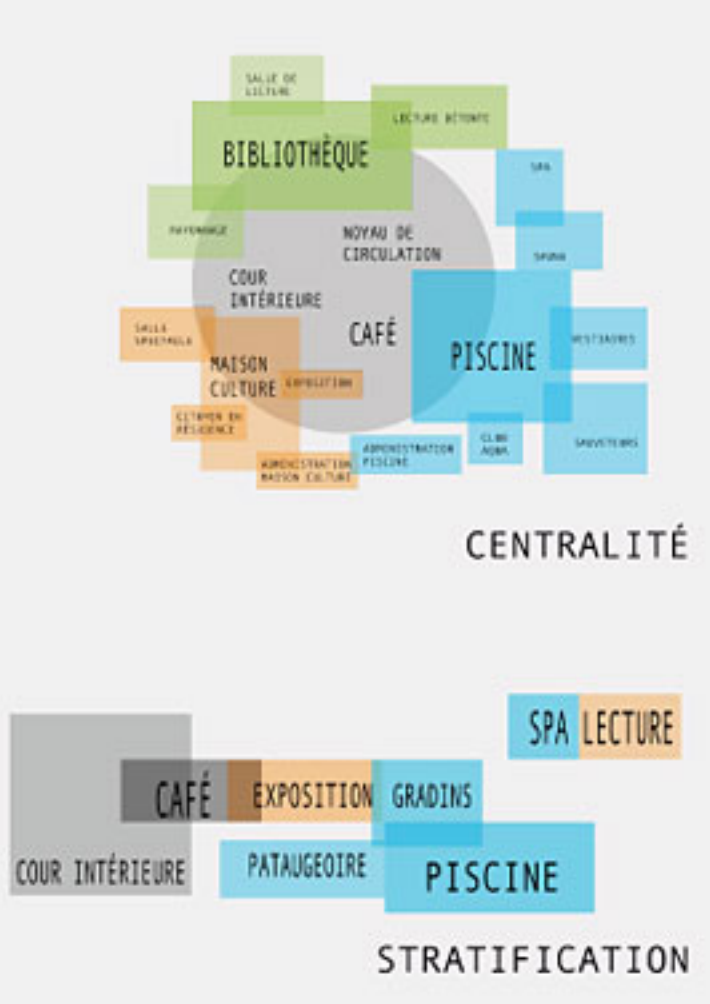


FIGURE PROGRAMMATIQUE

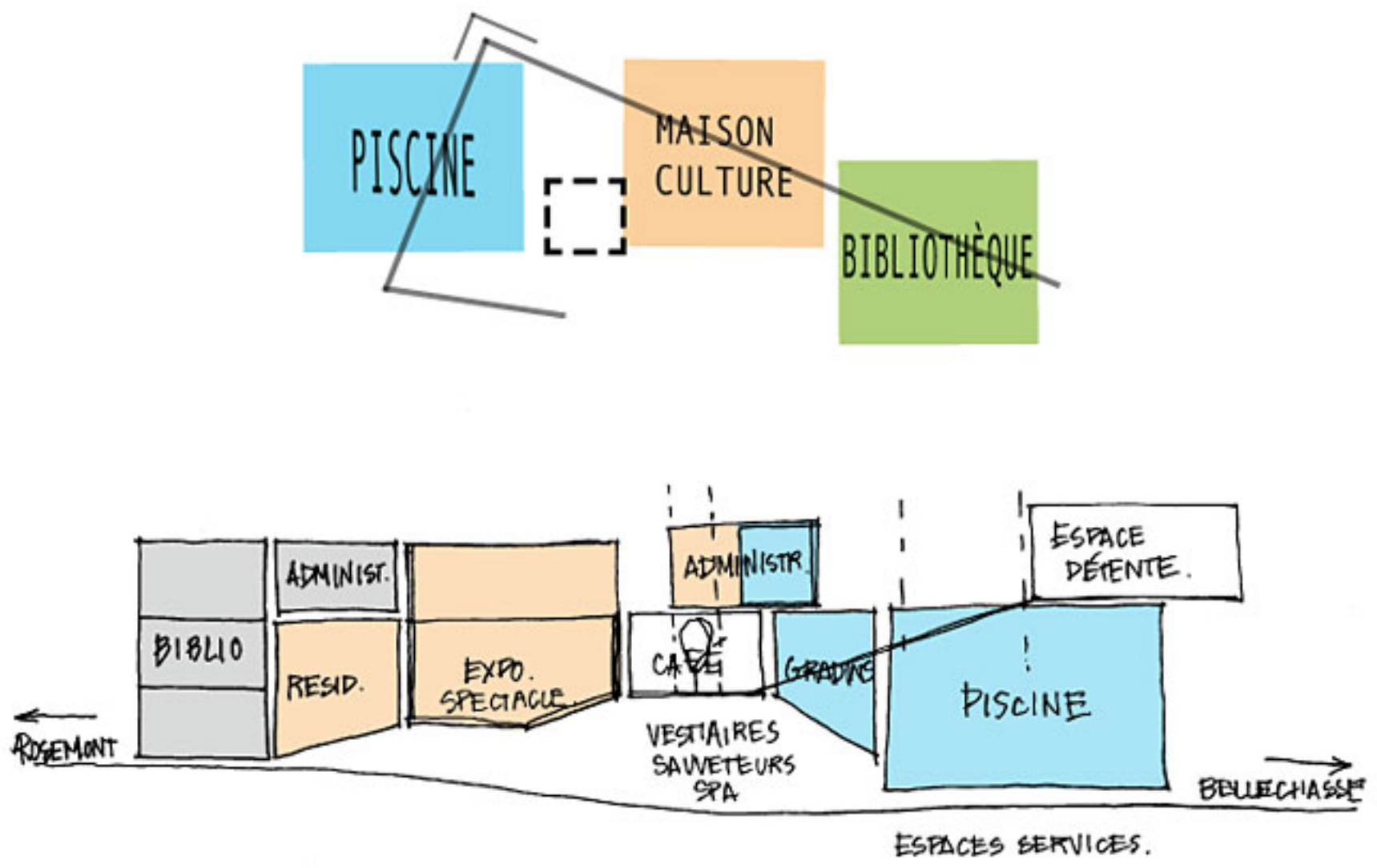
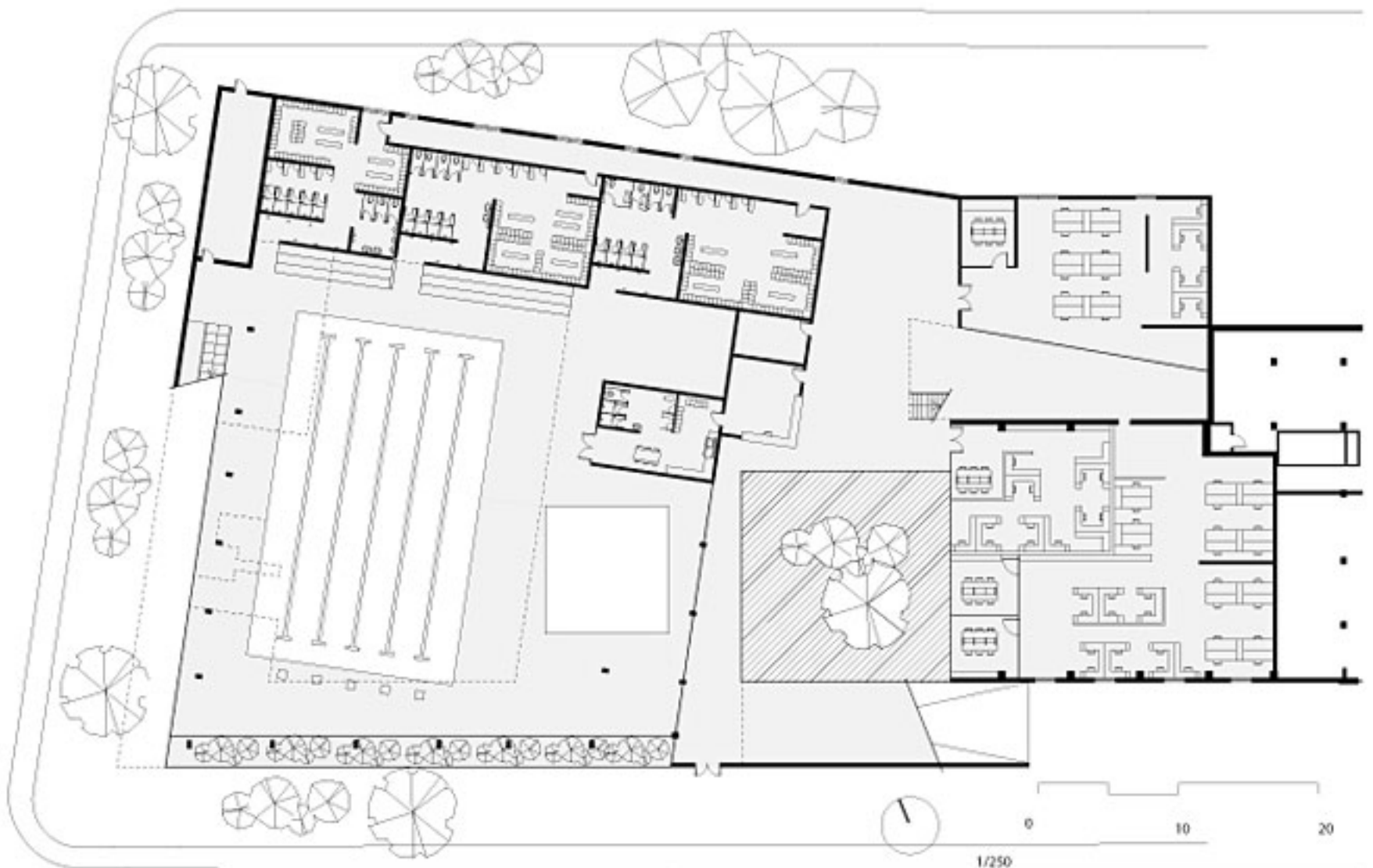
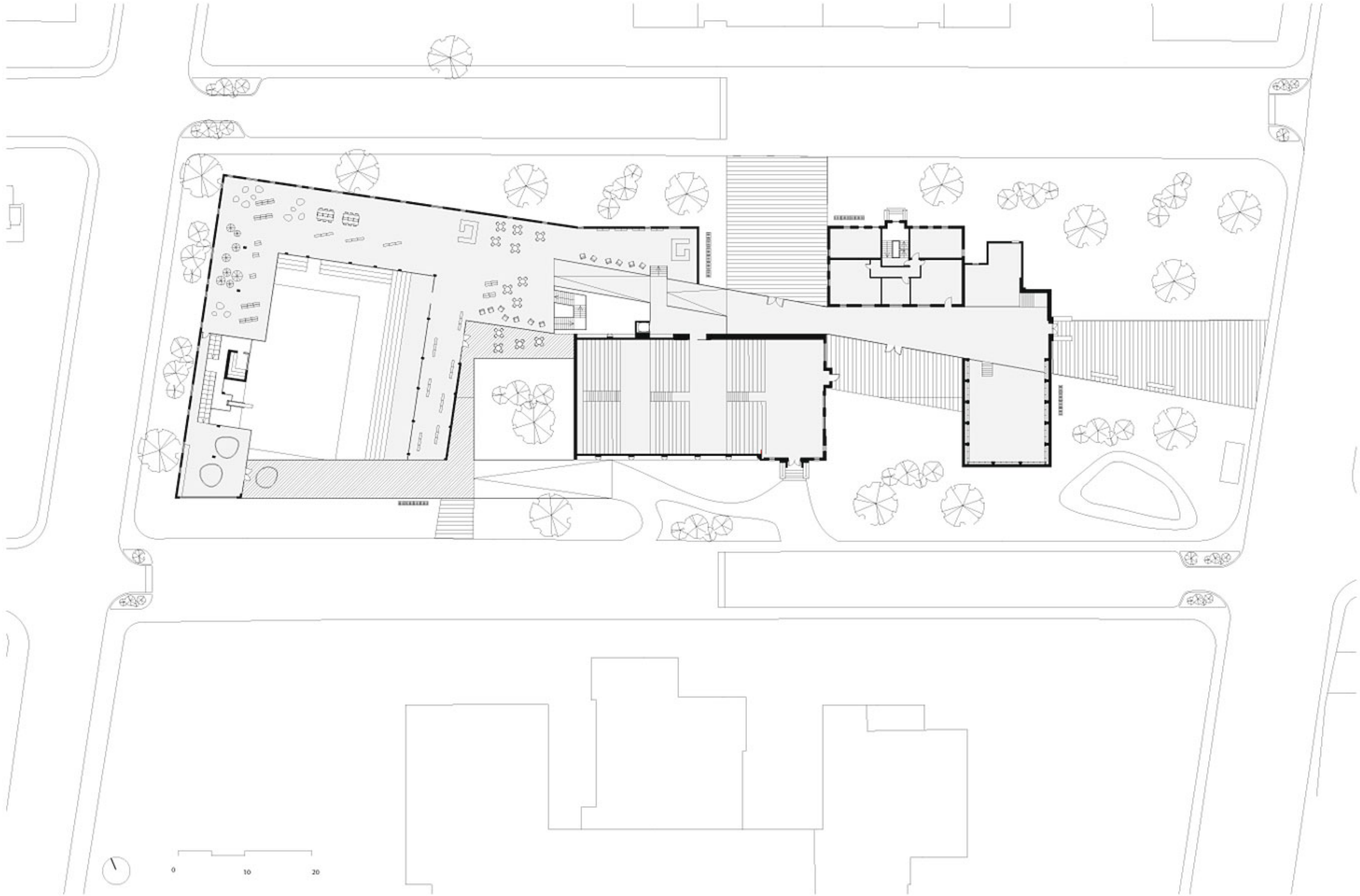


FIGURE SYNTHÈSE

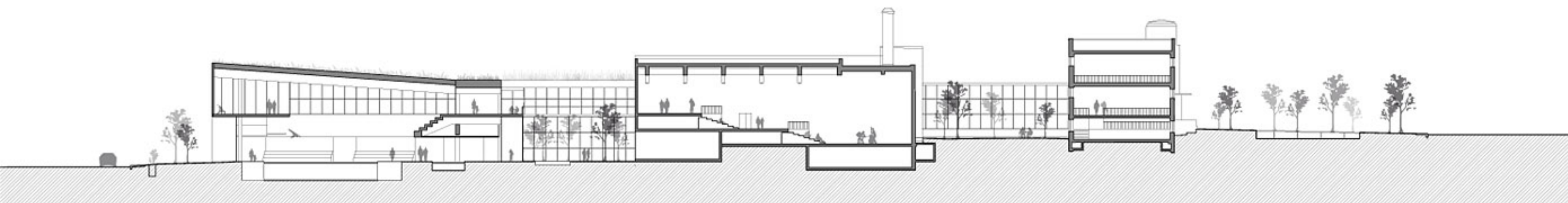


PLAN NIVEAU BELLECHASSE 1:250





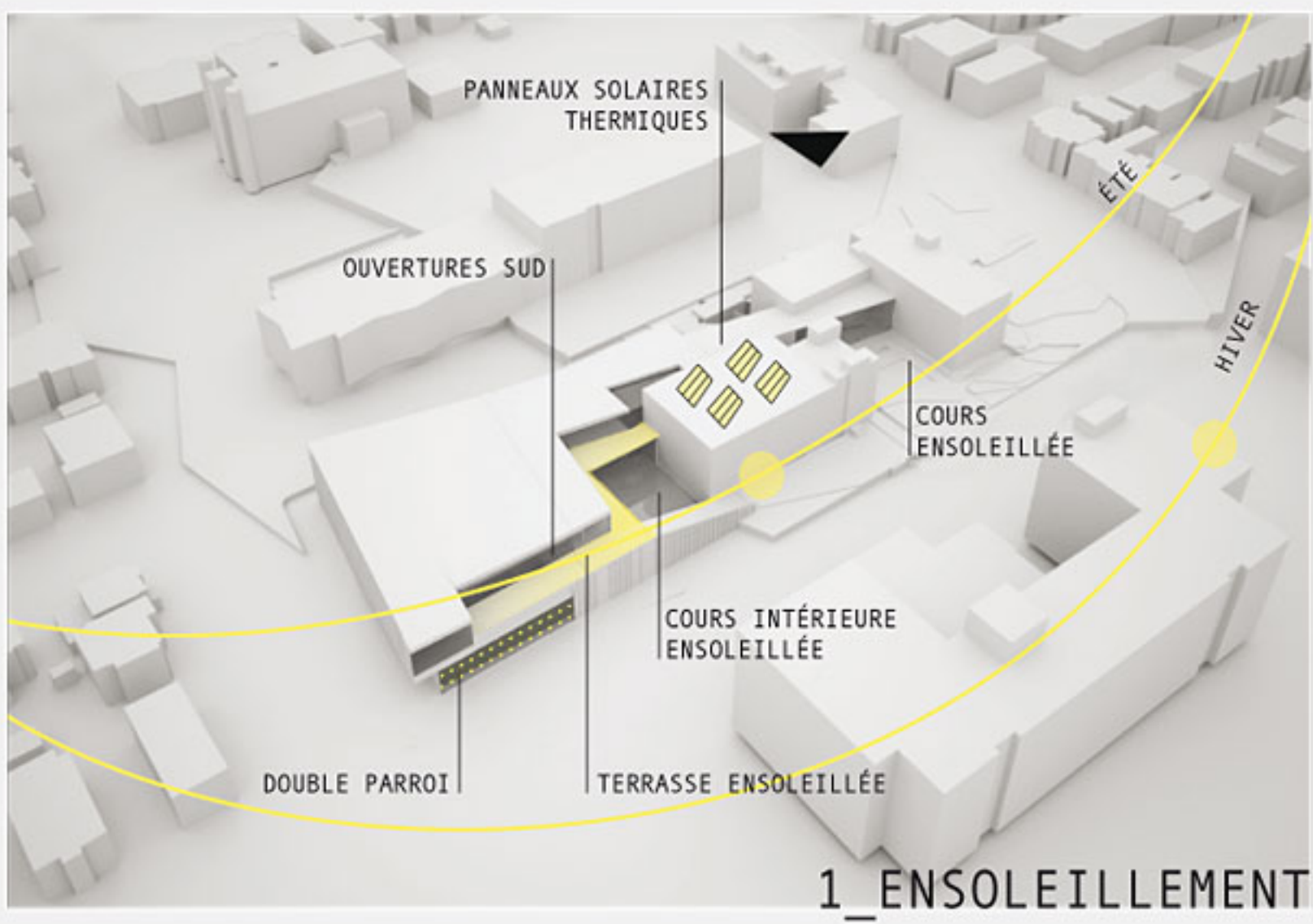
PLAN NIVEAU ROSEMONT
1:250



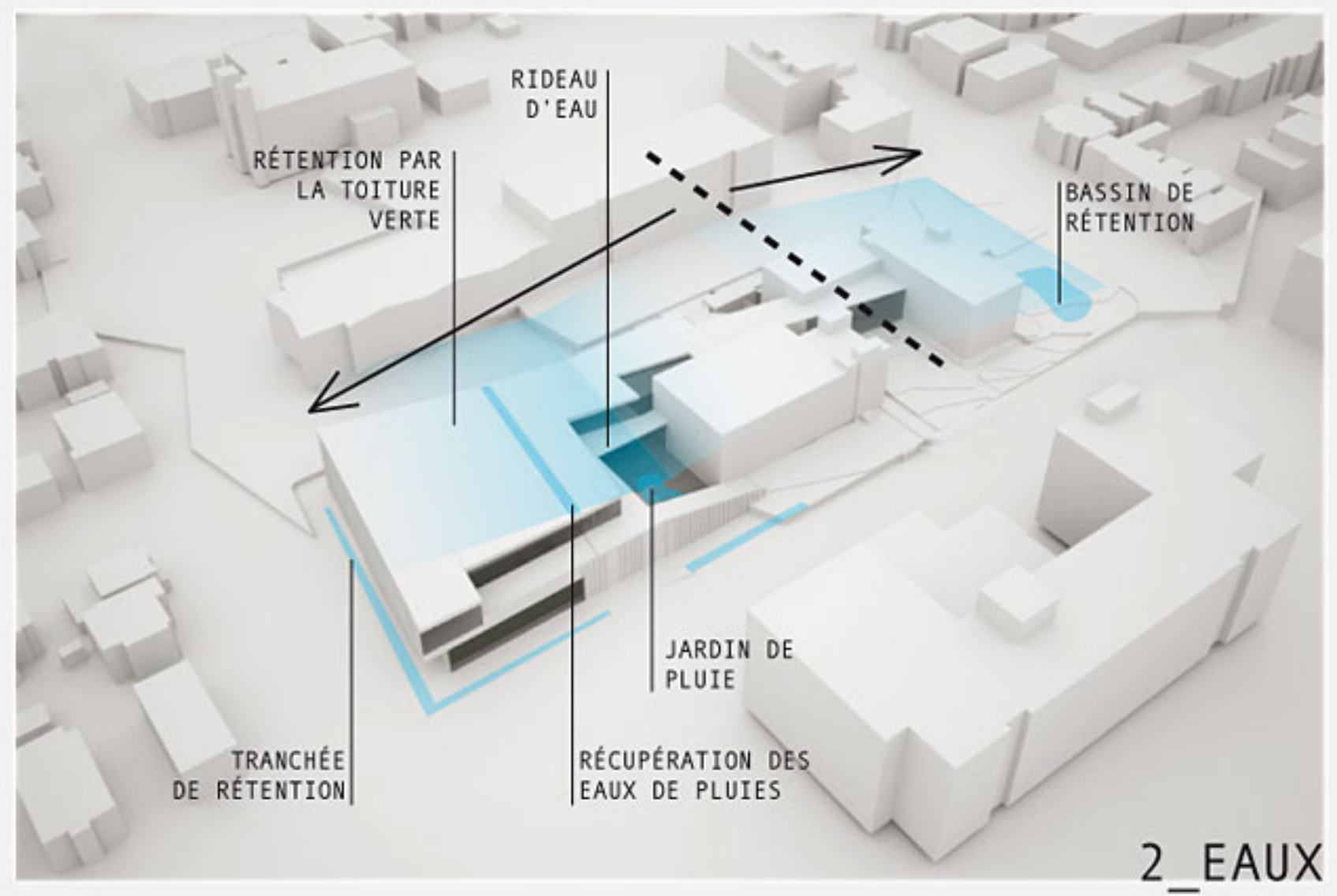
COUPE LONGITUDINALE
1/250



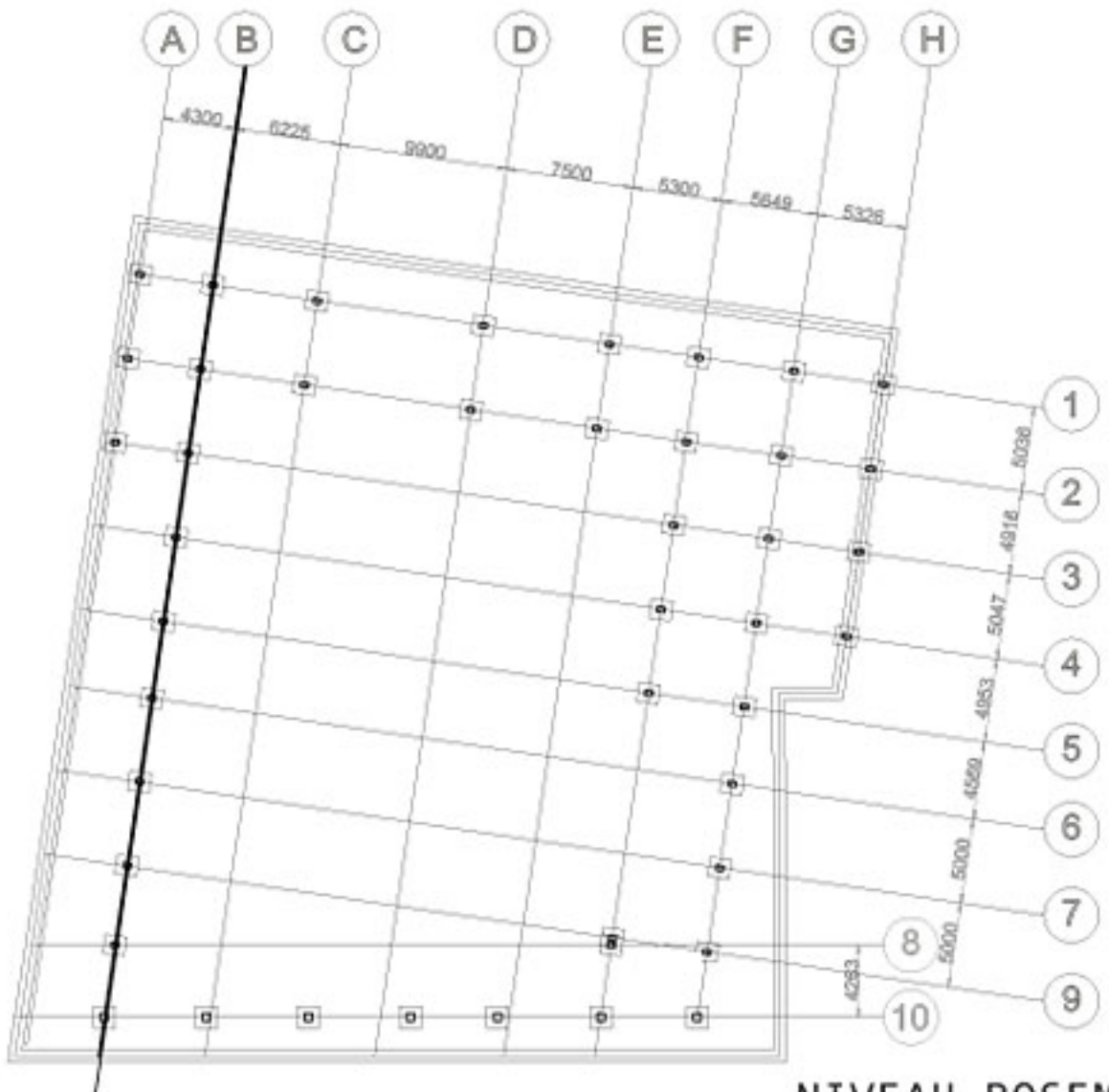
ÉLÉVATION SUD
1/250



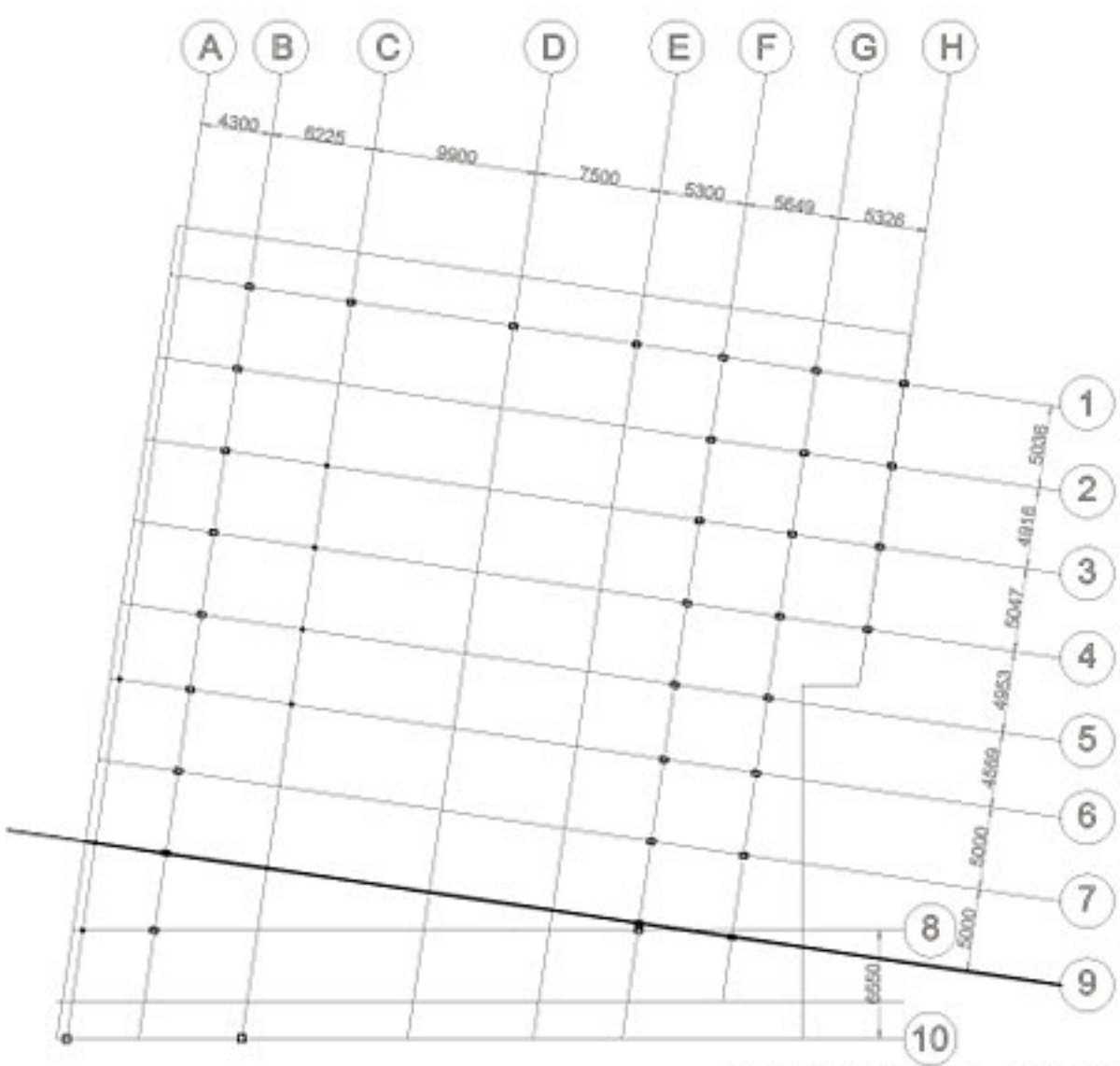
1_ENSOLEILLEMENT



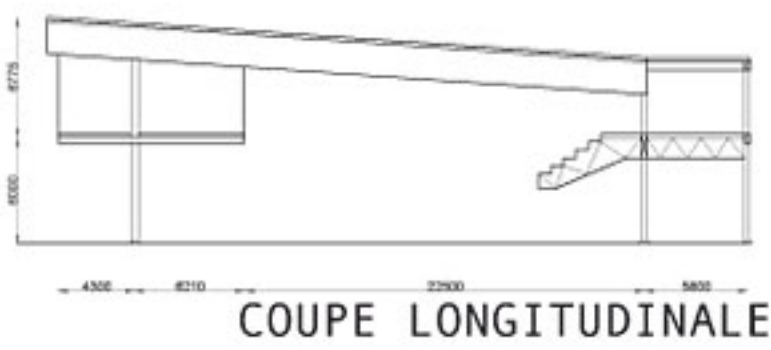
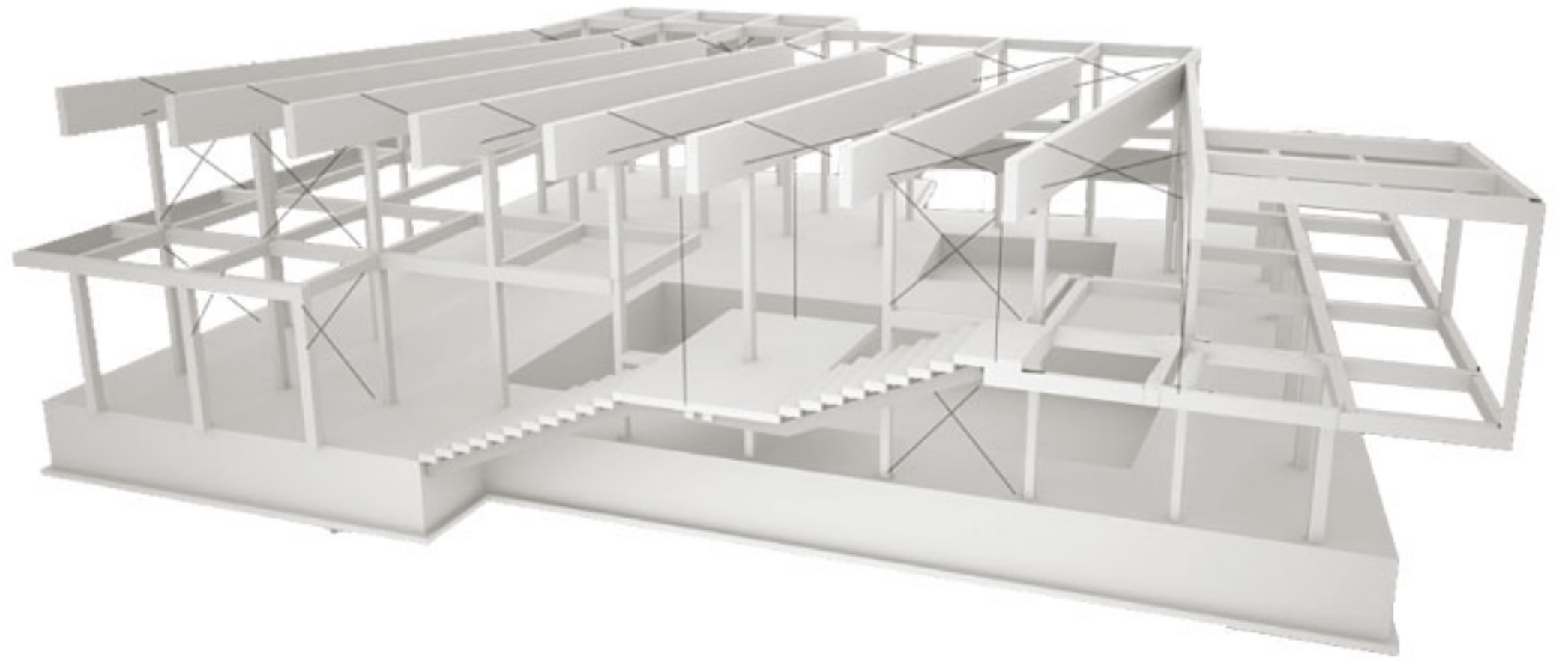
2_EAUX



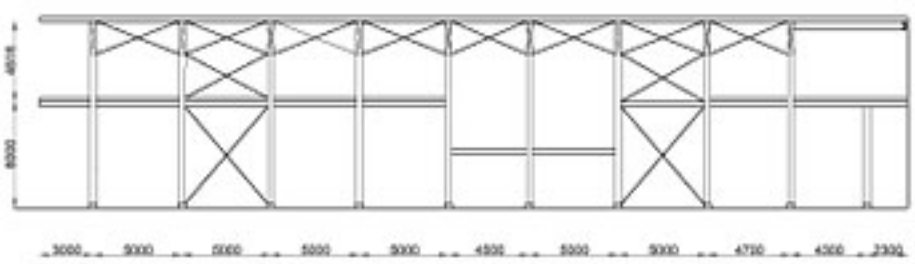
NIVEAU ROSEMONT
1/250



NIVEAU BELLECHASSE
1/250



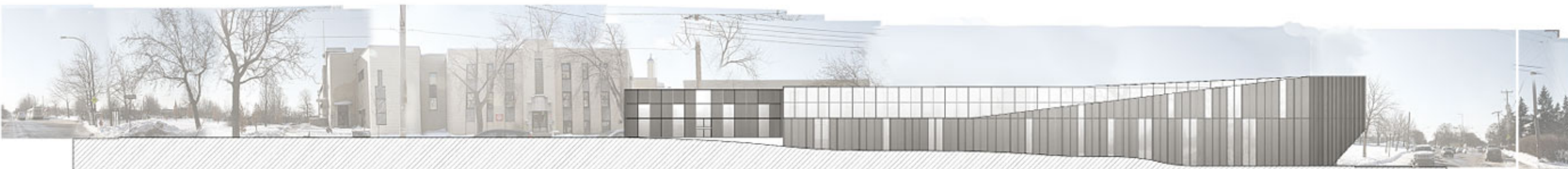
COUPE LONGITUDINALE

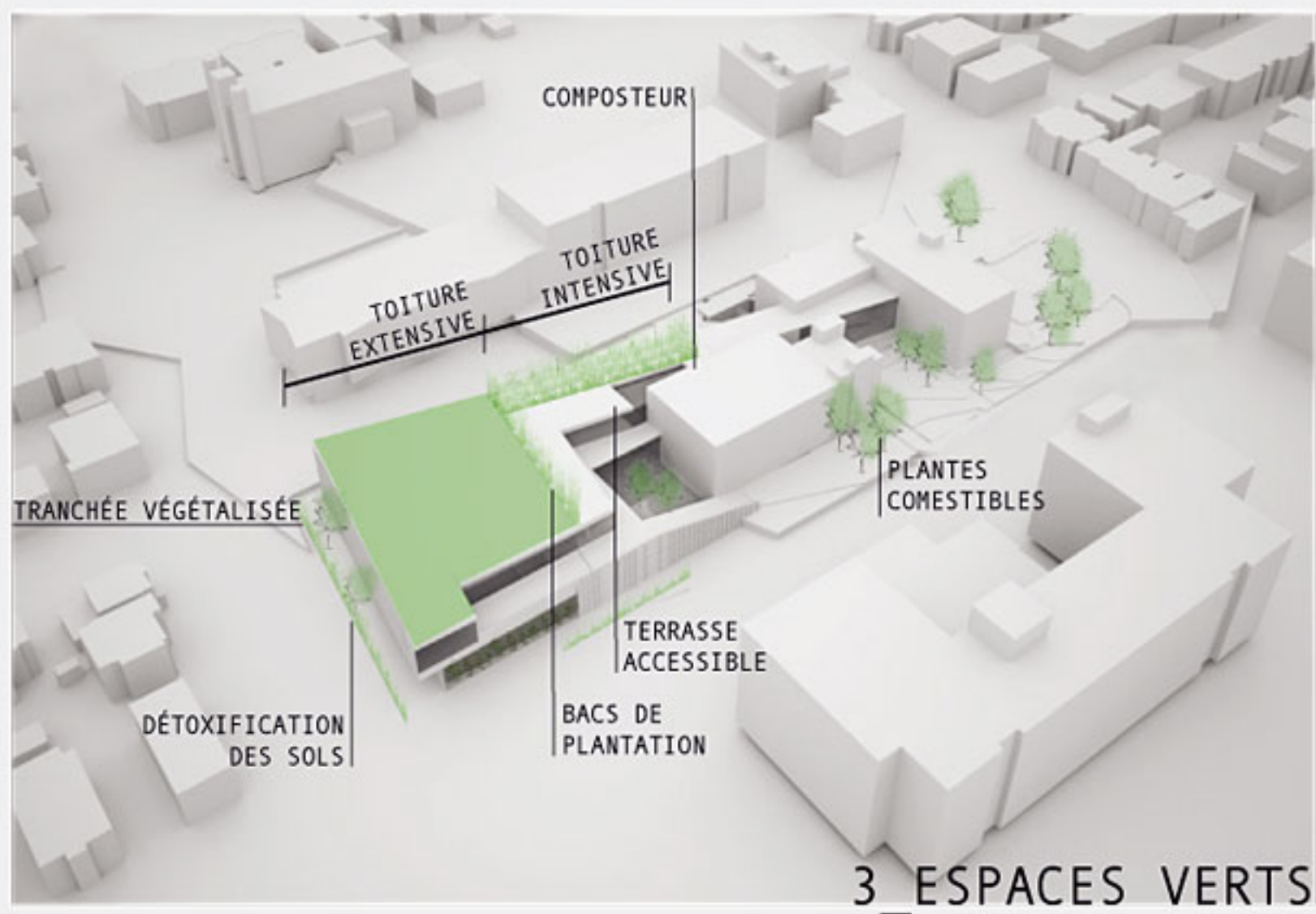


COUPE TRANSVERSALE

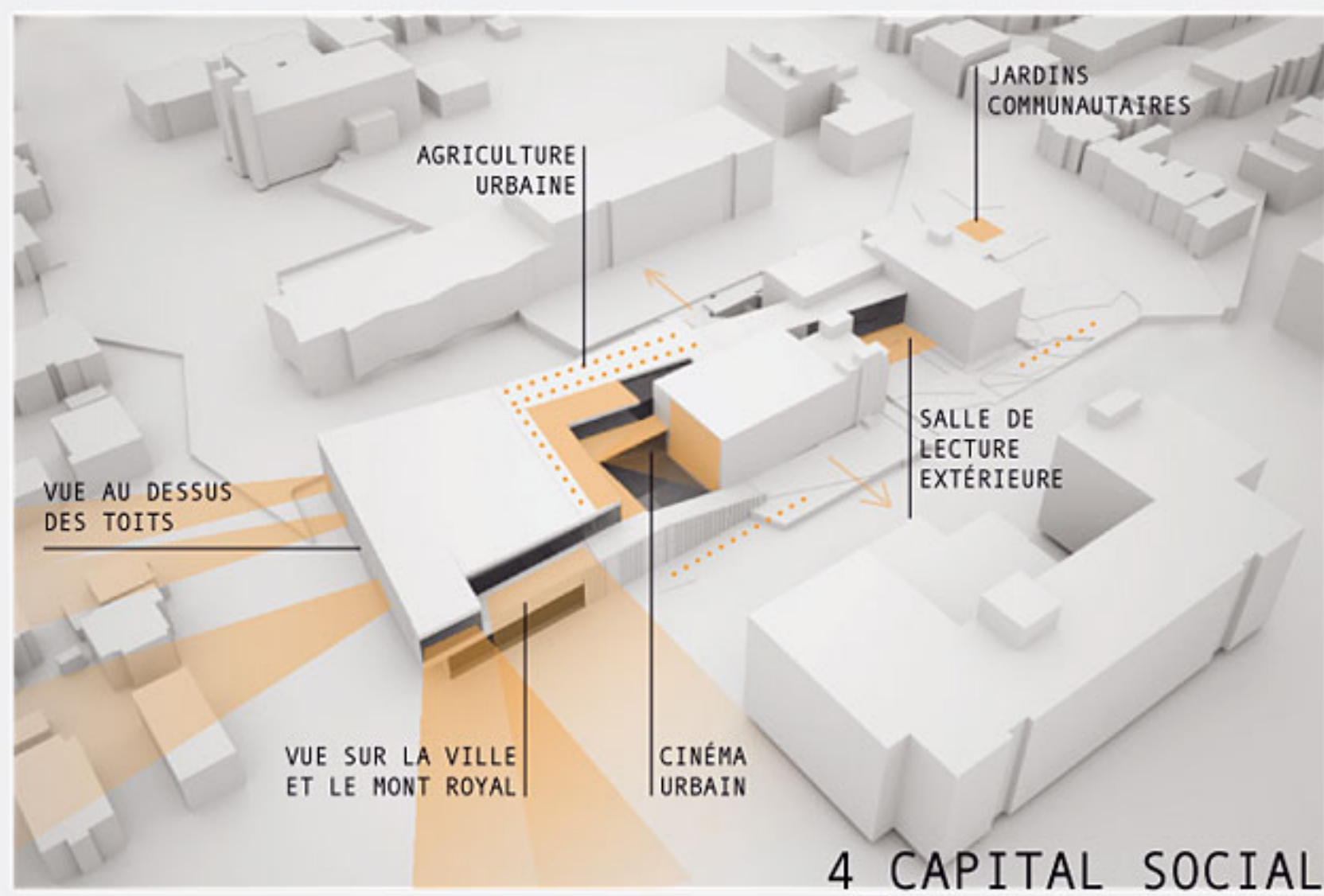


ÉLÉVATION NORD
1/250

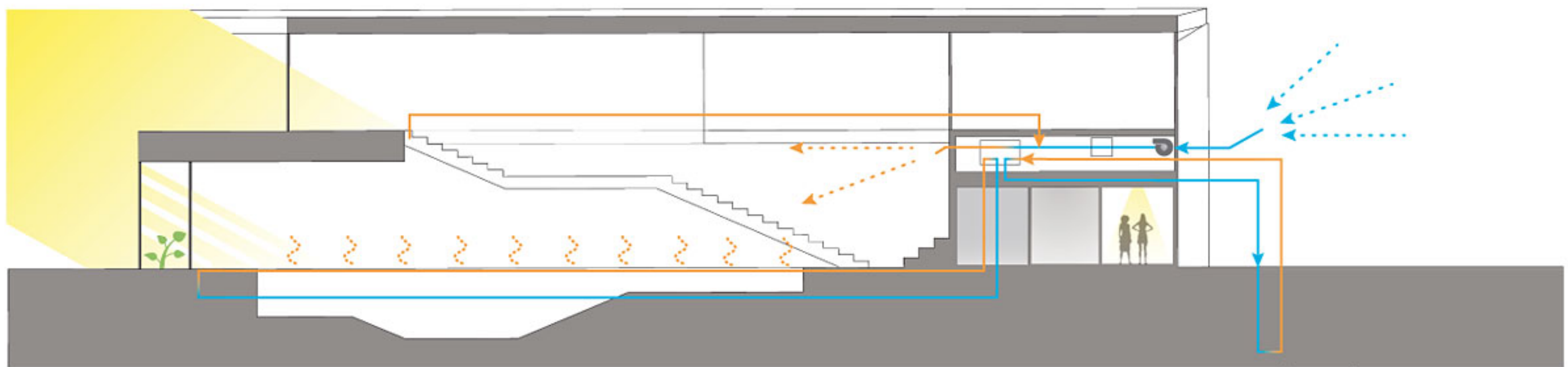




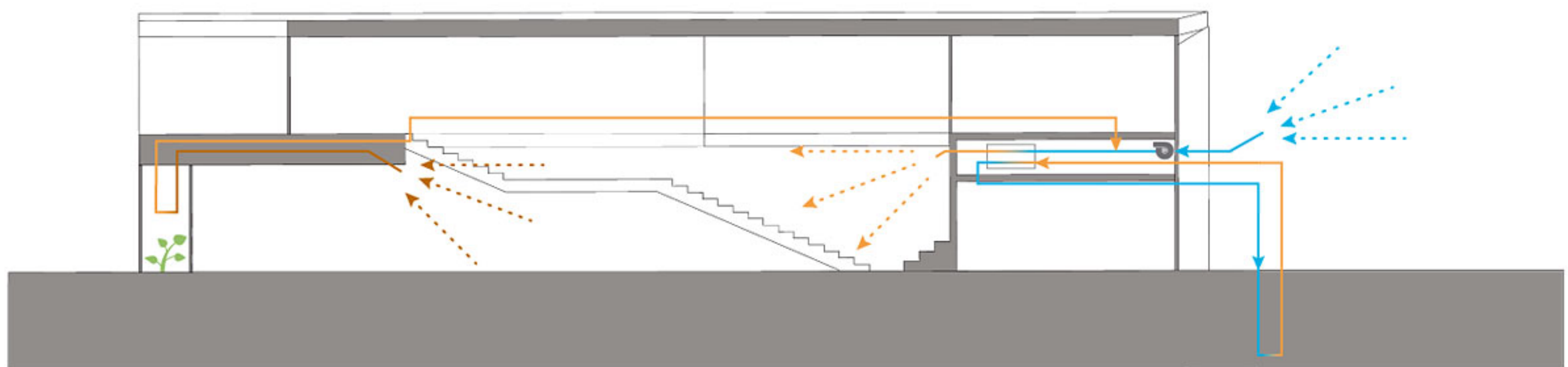
3 ESPACES VERTS



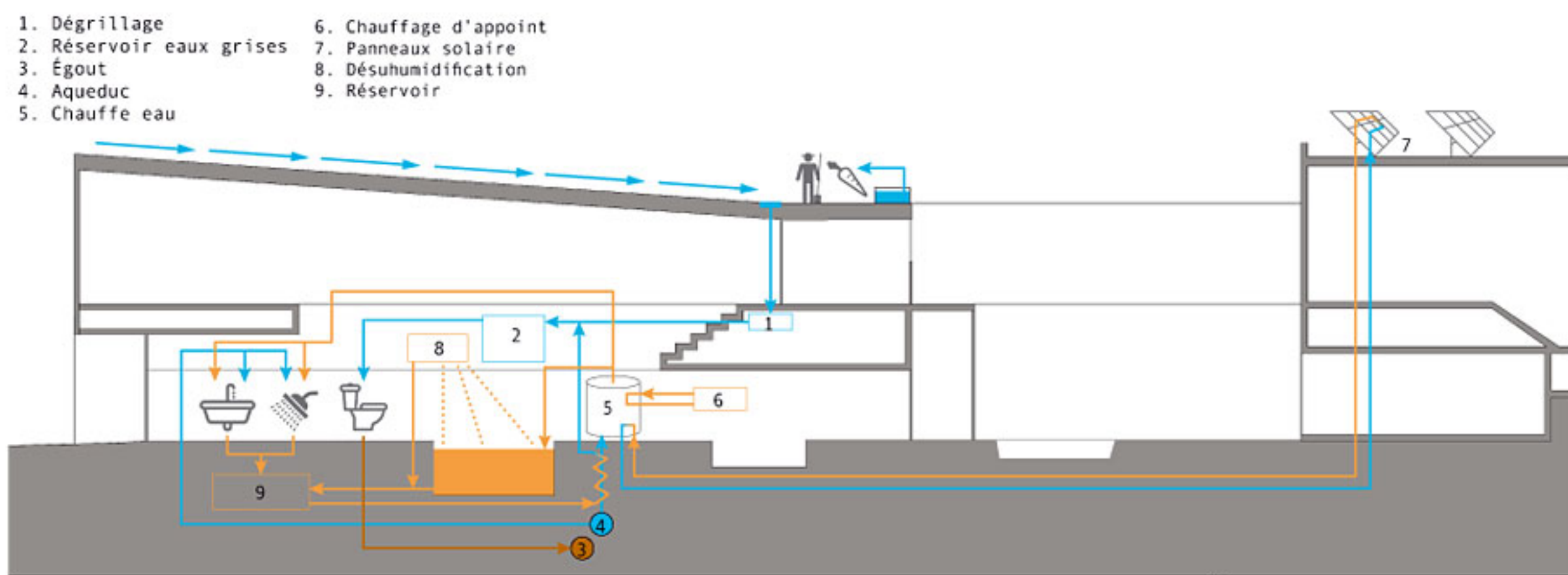
4 CAPITAL SOCIAL



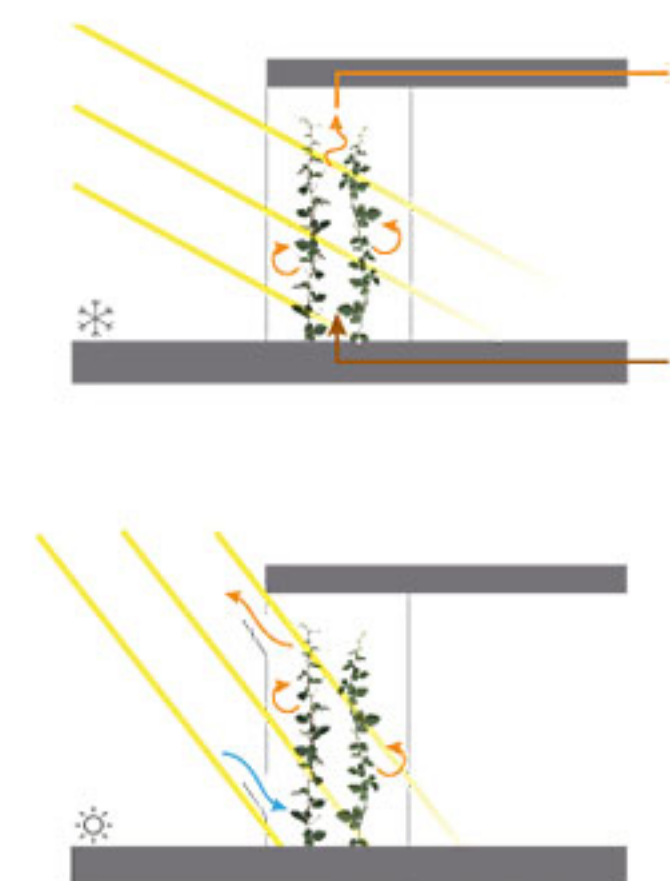
SCHEMA MECANIQUE PISCINE



SCHEMA MECANIQUE ESPACE COURANT



SCHEMA GESTION DES EAUX



DOUBLE PAROI

ASPECT ECONOMIQUE

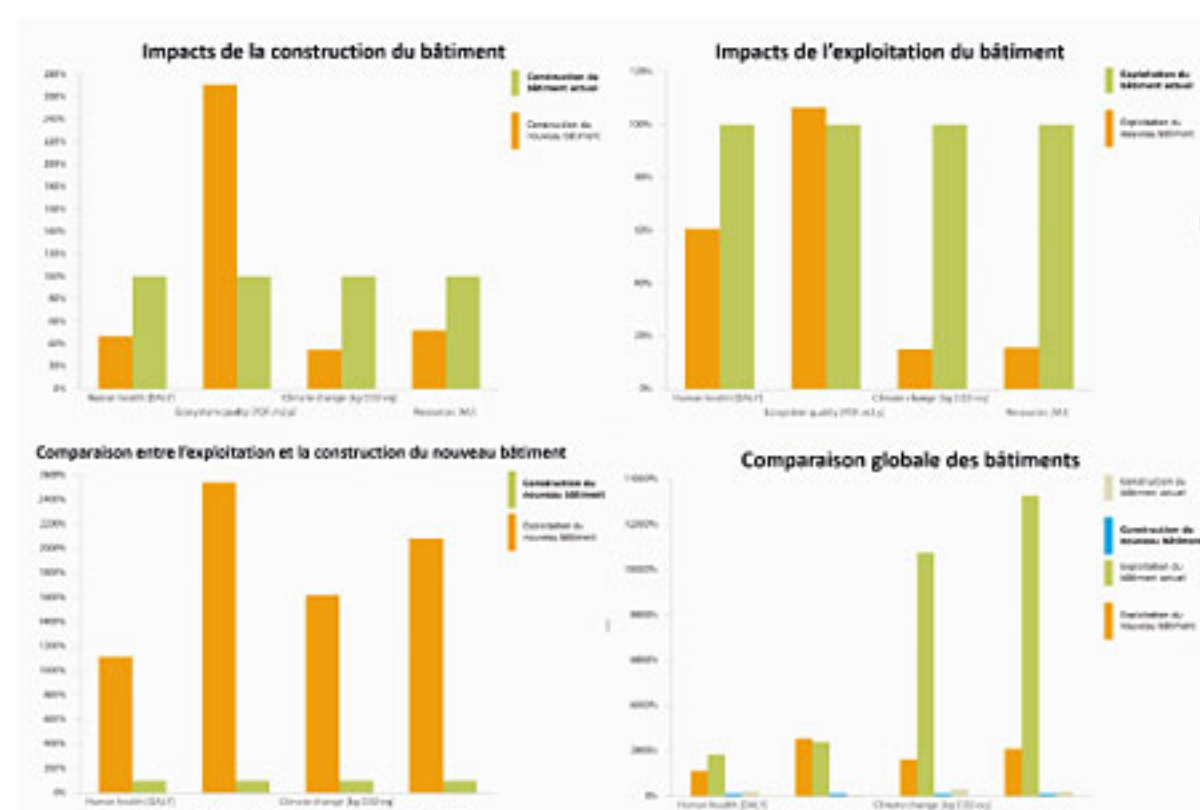
Investissements techniques	727 526 \$
Subventions	125 478 \$
Economie	111 715 \$/an
Retour sur investissement	5.4 ans

ASPECT ÉNERGÉTIQUE

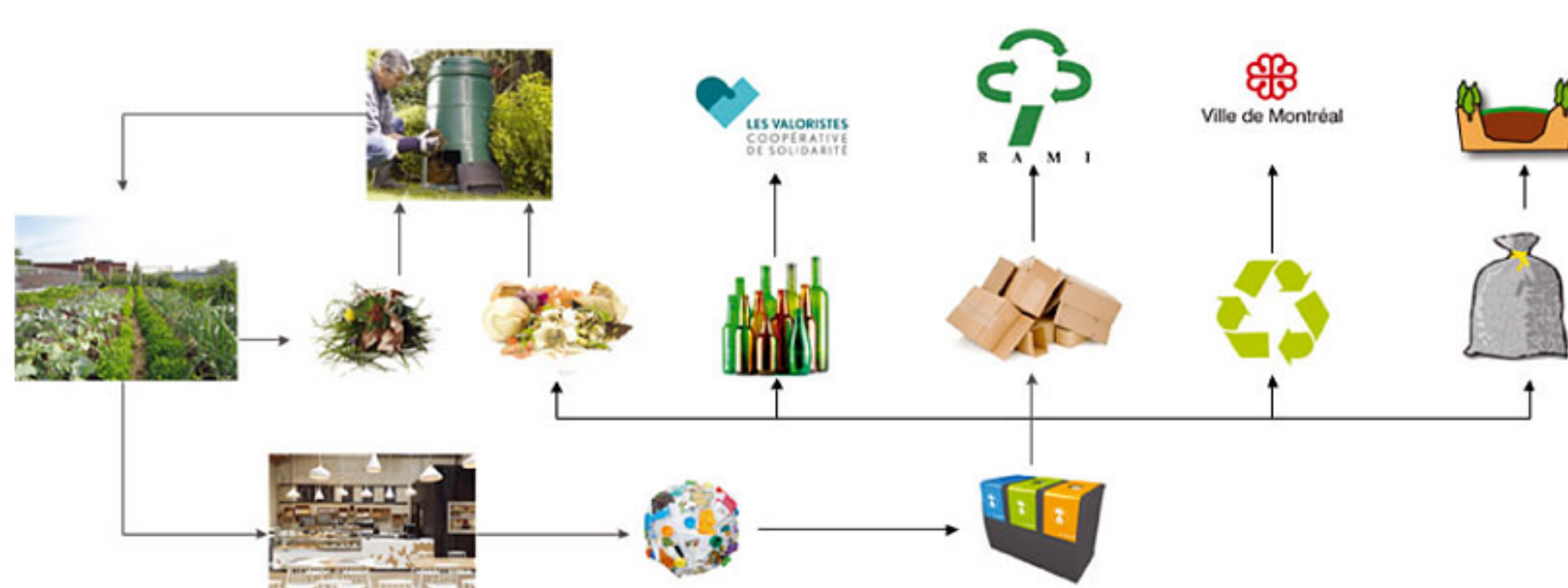
Consommation énergétique annuelle	1 034 093 kWh
Consommation énergétique spécifique	169 kWh/an
Comparaison au CNEB	56%

ASPECT EAU

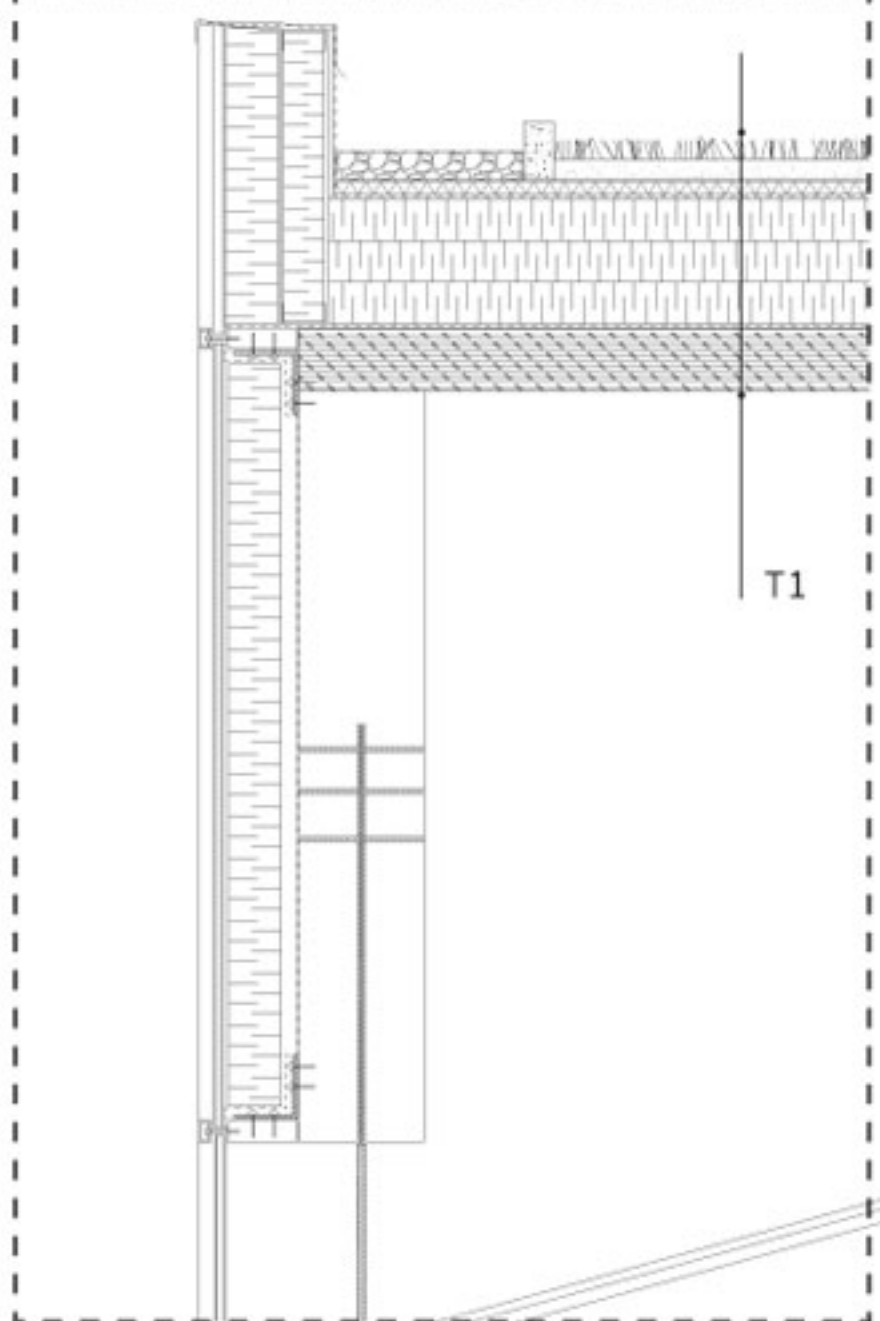
Consommation eau potable	14 256 100 L/an
Economie	2 843 000 L/an
Recuperation d'eau de pluie	761 885 L/an



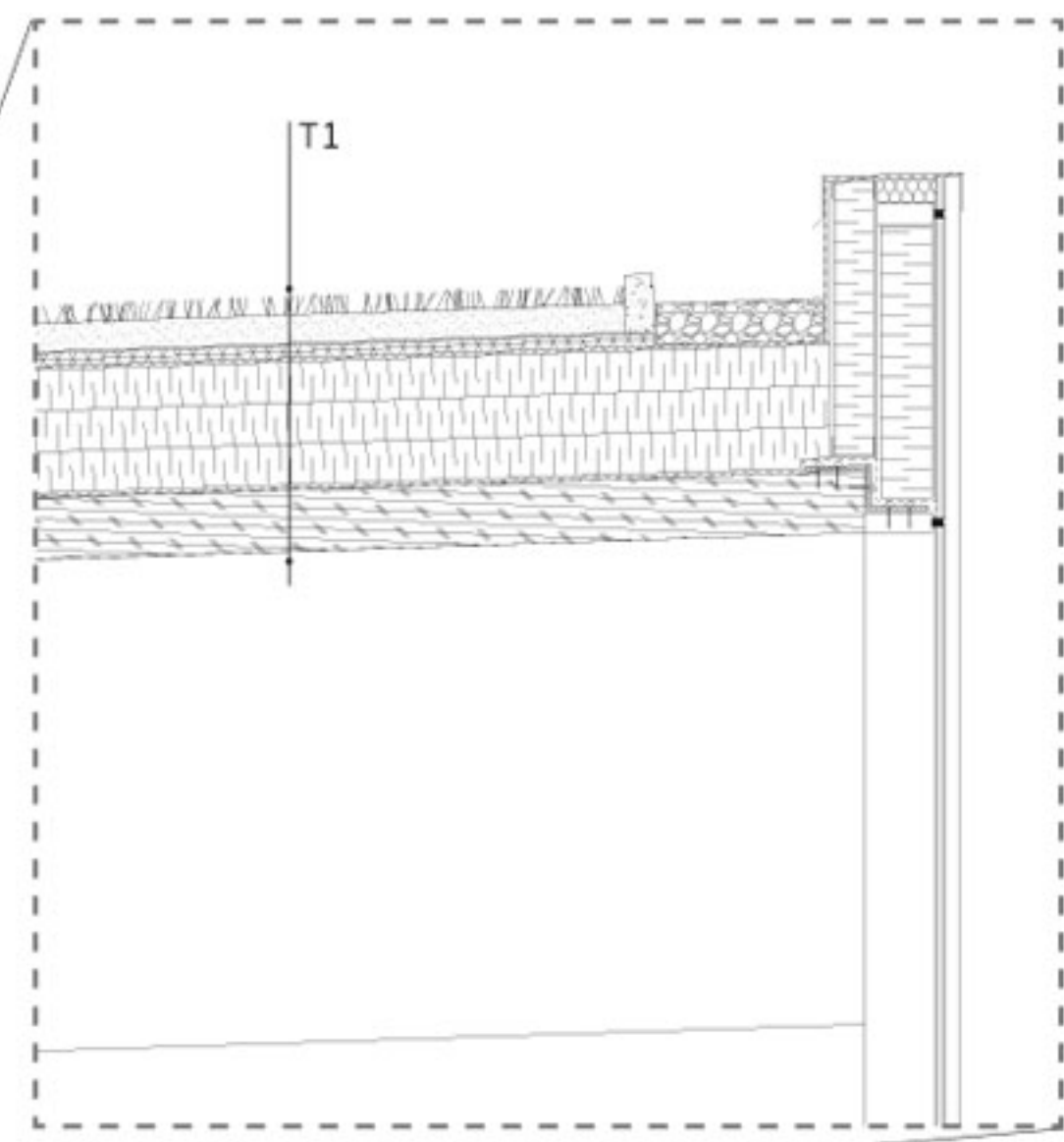
ANALYSE DU CYCLE DE VIE



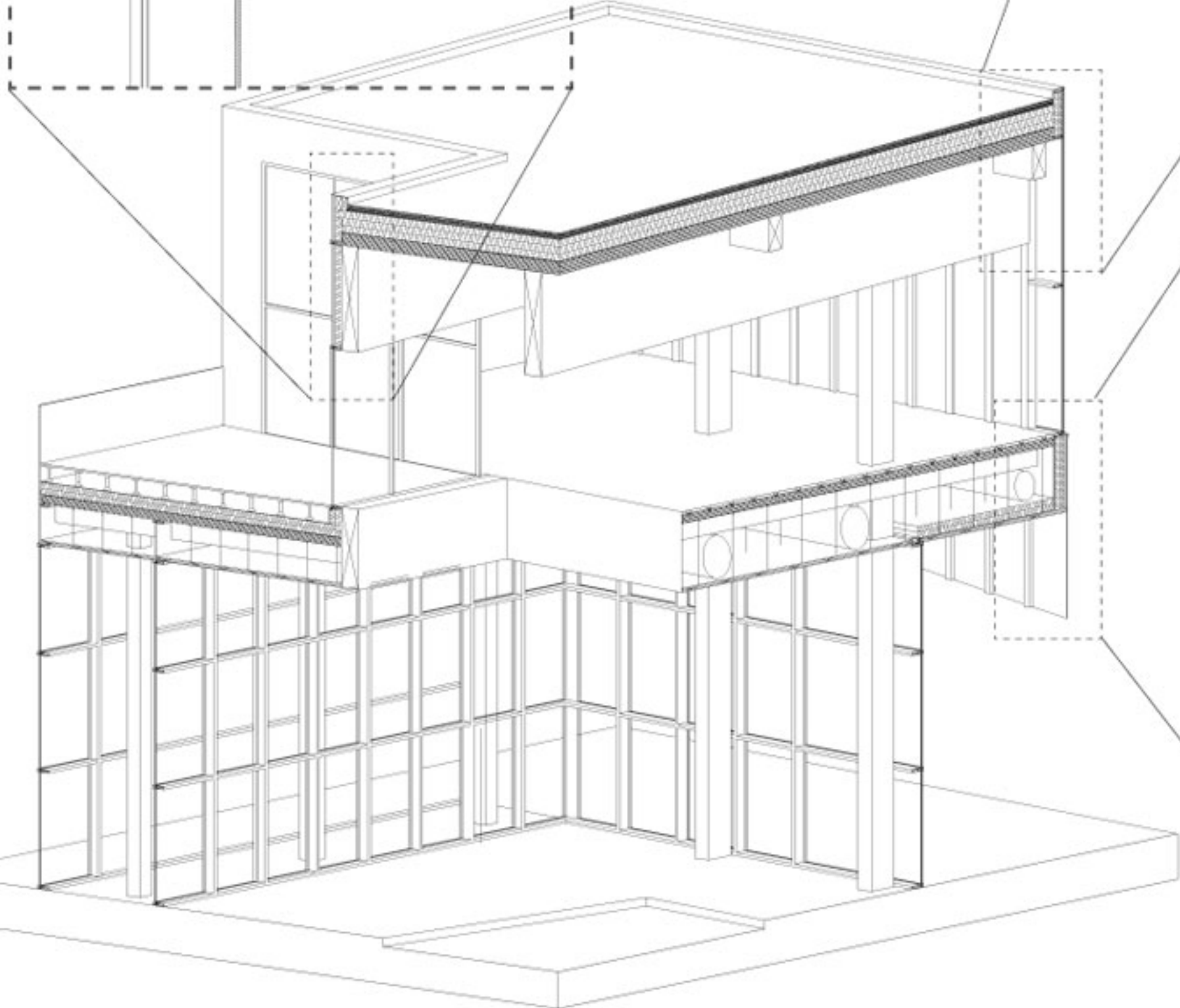
GESTION DES DÉCHETS



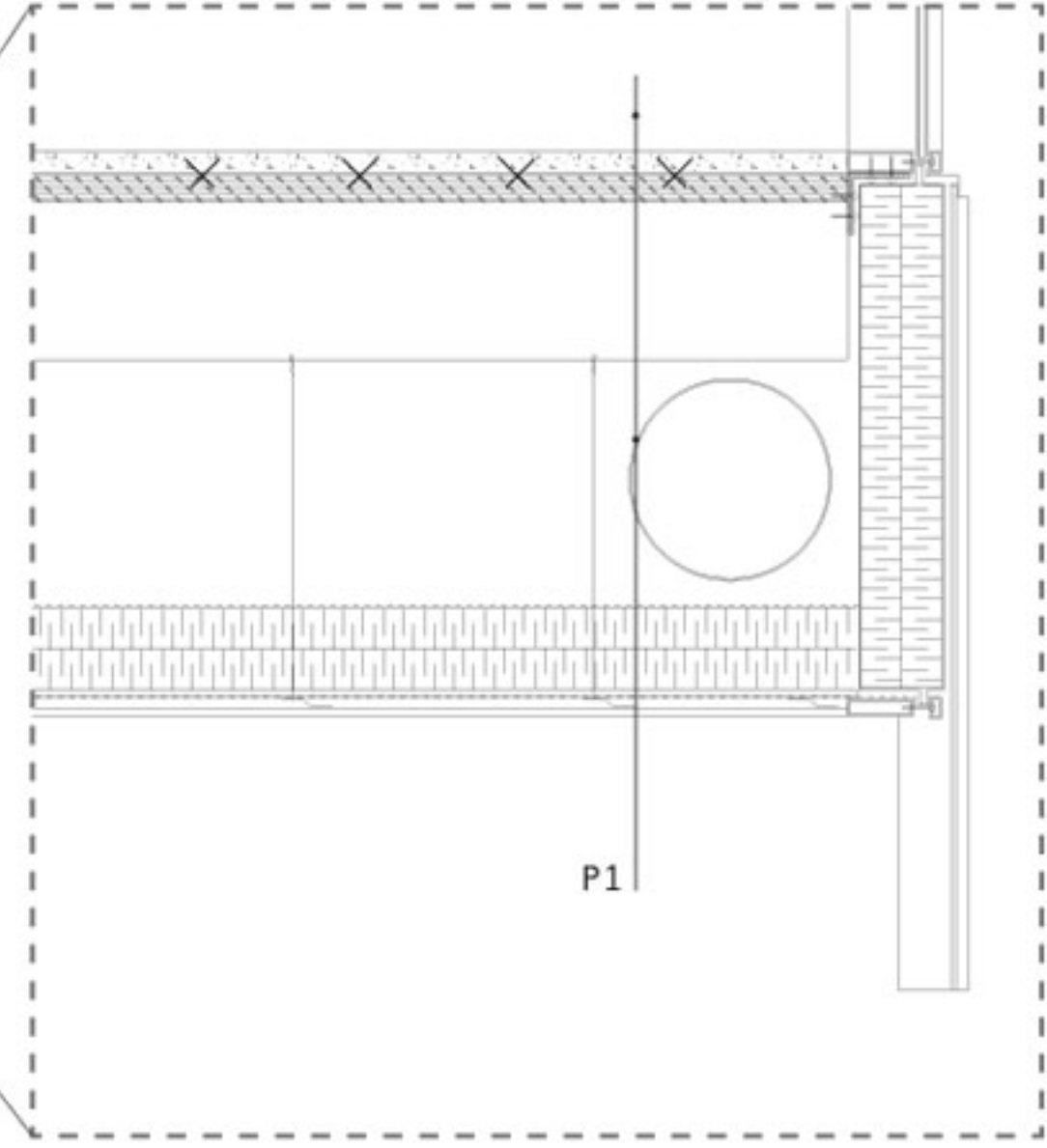
- T1**
 Végétation
 Substrat (70 mm)
 Géotextile anti-racine
 Complex drainant (30 mm)
 Etanchéité
 Platelage fibre de bois «isotop» (12.7 mm)
 Laine de roche (300 mm)
 Pare-vapeur
 Lamellé-croisée (220 mm)
 Poutre lamellé-collée (1800 mm)



PARAPET
1/10



FRAGMENT
1:50



SOFFITE
1/10

- P1**
 Chappe de béton armé (50 mm) P1
 Connecteurs métalliques
 Lamellé croisé (150 mm)
 Poutrelles lamellé collés (390 mm)
 Vide technique (610 mm)
 Pare-vapeur
 Laine de roche (200 mm)
 Platelage bois (15 mm)
 Pare-air
 Fourrures métalliques
 Parement bois clair

